

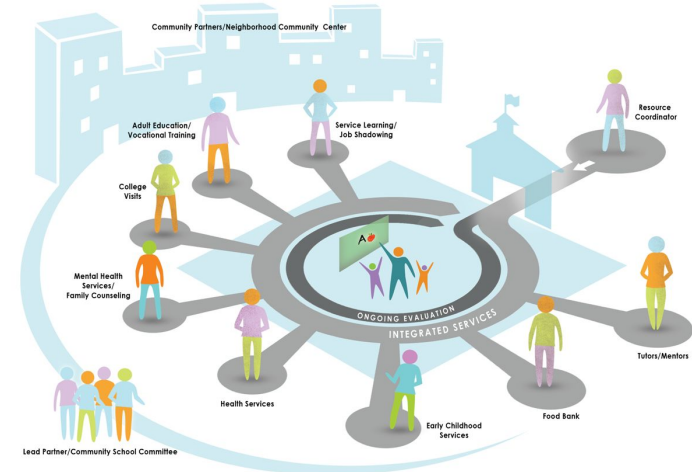
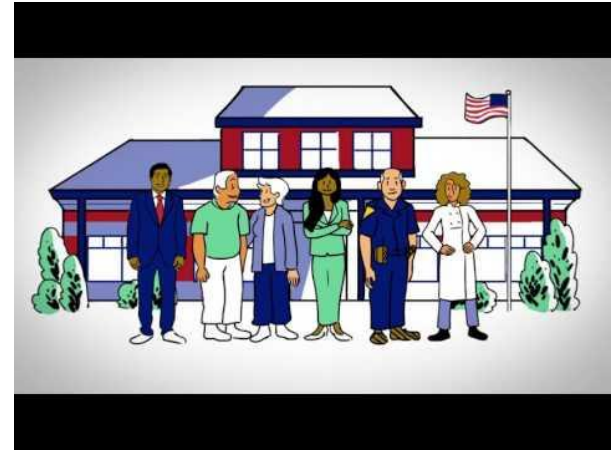


Leopold Community School

- WHAT IS COMMUNITY SCHOOL?
- WHO IS LEOPOLD?
- COMMITTEE
- NEEDS ASSESSMENT
- PRIORITIES
- GOALS
- CONNECTING ASSETS

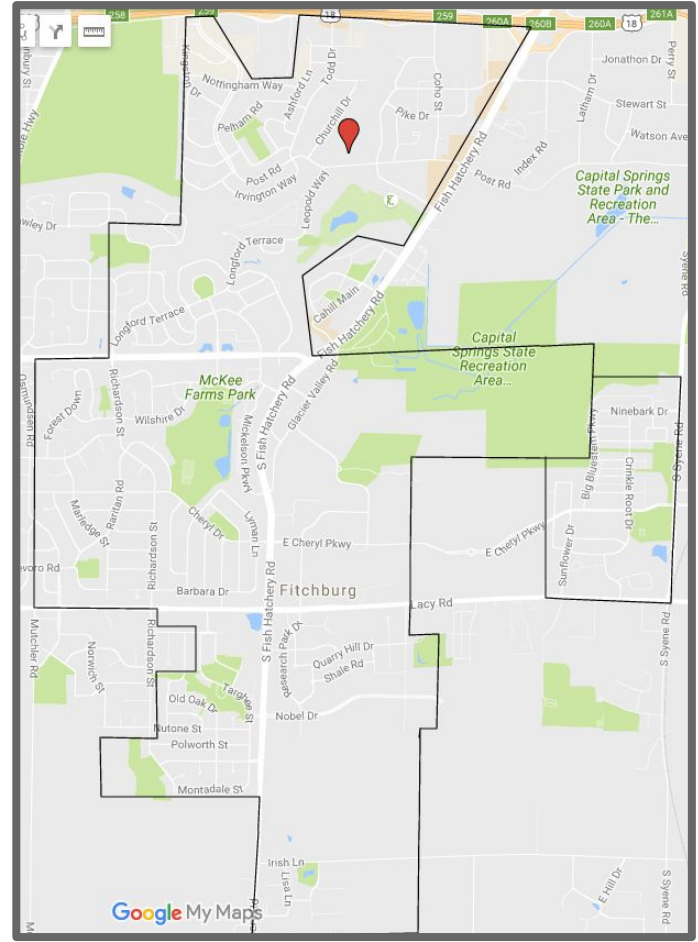
COMMUNITY SCHOOL MODEL

A COMMUNITY SCHOOL IS A WELCOMING AND INCLUSIVE PLACE THAT BUILDS ON THE ASSETS OF THE COMMUNITY TO HELP SERVE THE IDENTIFIED NEEDS OF THE STUDENTS, FAMILIES AND COMMUNITY THROUGH WELL INTEGRATED AND COORDINATED, STRATEGIC PARTNERSHIPS..



LEOPOLD ELEMENTARY SCHOOL AND COMMUNITY

- 730 STUDENTS
 - 25% BLACK OR AFRICAN AMERICAN
 - 38% HISPANIC/LATIN@
 - 24% WHITE
 - 8.5% MULTIRACIAL
 - GROWING HMONG AND ARABIC POPULATION
- 40% ENGLISH LANGUAGE LEARNERS
- 67.5% LOW INCOME FAMILIES
- CITY OF MADISON & CITY OF FITCHBURG



LEOPOLD COMMUNITY SCHOOL COMMITTEE

MISSION STATEMENT:

"LEOPOLD CSC IS A DYNAMIC GROUP WITH A FOCUSED GOAL TO **HARNESS THE POWER OF COMMUNITY** TO IGNITE THE INHERENT TALENTS AND GREATNESS OF EVERYONE WITHIN THE LEOPOLD COMMUNITY.

WHEN MAKING DECISIONS, WE WILL:

RECOGNIZE THE ASSETS AND RESOURCES IN THE COMMUNITY.

RESPECT THE DIVERSITY OF THE COMMUNITY.

EMPOWER ALL MEMBERS OF THE COMMUNITY TO BE AGENTS OF CHANGE."



NEEDS ASSESSMENT

DATA SOURCES:

- CONVERSATIONS WITH FAMILIES, STAFF, AND STUDENTS IN MULTIPLE WAYS
 - "WHAT DO YOU LOVE ABOUT LEOPOLD & YOUR COMMUNITY?"
 - "WHAT DREAMS DO YOU HAVE FOR LEOPOLD & YOUR COMMUNITY?"
 - "WHAT ROLE CAN YOU PLAY IN CREATING CHANGE FOR LEOPOLD & YOUR COMMUNITY?"
- SCHOOL DEMOGRAPHICS
- ACADEMIC PERFORMANCE
- BEHAVIOR REFERRALS
- CITY OF FITCHBURG NINE SPRINGS HEALTH IMPACT ASSESSMENT 2014
- CITY OF FITCHBURG NEIGHBORHOOD CENTER CONCEPT ANALYSIS 2016



NEEDS IDENTIFIED

1. ACADEMIC SUPPORT FOR AFRICAN AMERICAN, LATINO, LOW INCOME STUDENTS IN LITERACY AND MATH.
2. ACCESS TO FRESH, HEALTHY FOODS FOR FAMILIES.
3. SOCIAL EMOTIONAL/ BEHAVIORAL SUPPORT FOR AFRICAN AMERICAN STUDENTS.
4. SAFE, SUPERVISED PHYSICAL ACTIVITY OPPORTUNITIES FOR CHILDREN.
5. RELEVANT, CREATIVE, REGULAR ENRICHMENT OPPORTUNITIES FOR STUDENTS.
6. EARLY EDUCATION SUPPORT.
7. OUT OF SCHOOL TIME PROGRAMMING
8. REMOVE TRANSPORTATION BARRIERS TO ACCESSING SERVICES.
9. INCREASE COMMUNICATION AND COLLABORATION BETWEEN SCHOOL AND FAMILIES IN RELATION TO LEARNING.
10. PATHWAYS FOR FAMILIES TO BE EXPERTS WITHIN SCHOOL AND COMMUNITY.
11. OPPORTUNITIES FOR PEOPLE OF COLOR AND DIVERSE BACKGROUNDS TO BE IN POSITIONS OF POWER WITHIN SCHOOL.
12. INTENTIONAL USE OF CULTURE AND DIVERSITY PRESENT IN SCHOOL AND COMMUNITY.



PRIORITY AREAS

1. ACADEMIC SUPPORT FOR AFRICAN AMERICAN, LATINX, LOW INCOME STUDENTS IN LITERACY AND MATH.
2. OUT OF SCHOOL TIME PROGRAMMING -- CHILD CARE & ENRICHMENT "CLUB" OPPORTUNITIES
3. OPPORTUNITIES FOR PEOPLE OF COLOR AND DIVERSE BACKGROUNDS TO BE IN POSITIONS OF POWER WITHIN SCHOOL.



COORDINATION PLANS

1. ACADEMIC SUPPORT

- A. CONTINUE AND STRENGTHEN PARTNERSHIP WITH LITERACY NETWORK TO SUPPORT FAMILY LITERACY SKILLS IN BOTH ENGLISH AND SPANISH

2. OUT OF SCHOOL TIME

- A. INCREASED ENROLLMENT IN SCHOOL BASED AFTER SCHOOL PROGRAMS
- B. INCREASED AFTER SCHOOL ENRICHMENT OPPORTUNITIES
 - I. COMMUNITY GROUNDWORKS - GARDEN CLUB
 - II. HEALTHY KIDS COLLABORATIVE - STUDENT ADVOCACY TEAM
 - III. UPCOMING: UW ARBORETUM, PERFORMING OURSELVES,

3. REPRESENTATIVE DIVERSITY IN POSITIONS OF POWER

- A. INCREASE IN ROOM PARENT PARTICIPATION
- B. INCREASE IN AFRICAN AMERICAN PARENT PARTICIPATION ON COMMUNITY SCHOOL COMMITTEE
- C. IMPLEMENT MALDEF PARENT SCHOOL PARTNERSHIP CURRICULUM



OTHER ADDITIONS, CONNECTIONS, COLLABORATIONS..

COMMUNITY EVENTS

- SUMMER PROGRAMMING
@ LEOPOLD PARK (FITCHBURG LIBRARY)
- SUMMER CELEBRATION @ NINE SPRINGS (FITCHBURG PARKS & RECREATION)
- YMCA & MADISON POLICE SUMMER SPORTS
- MADISON POLICE/AMIGOS EN AZUL
SUMMER SOCCER SERIES

NEIGHBORHOOD ADVOCACY

- CITY OF MADISON NEIGHBORHOOD RESOURCE TEAM
- JOINING FORCES FOR FAMILIES
- MADISON POLICE NEIGHBORHOOD
NEEDS ASSESSMENT
- UW SOUTH MADISON PARTNERSHIP
- MADISON BIKE EQUITY COMMITTEE

PARTNERSHIPS & COLLABORATIONS:

- SAFE ROUTES TO SCHOOL
- URBAN TREE ALLIANCE
- PERFORMING OURSELVES
- NEXT STEPS MINISTRIES
- 1000 FRIENDS OF WISCONSIN
- YMCA SUMMER LEARNING PROGRAM
- LATINO WORKFORCE DEVELOPMENT
- URBAN LEAGUE WORKFORCE DEVELOPMENT

SCHOOL LEVEL ADDITIONS:

- 4 YEAR OLD KINDERGARDEN
- PLAY AND LEARN
- RESOURCE ROOM (ROOM 300)

FUNDING:

- \$10,000 MADISON COMMUNITY FOUNDATION

YEAR 1 CHALLENGES & AREAS OF GROWTH

- CONNECTING AND ENGAGING MORE LEOPOLD STAFF MEMBERS
- AFTER SCHOOL PROVIDERS -- LACK OF STAFFING & FLEXIBILITY
- VOLUNTEER SYSTEM CREATION
- CULTURALLY AND LINGUISTICALLY RESPONSIVE PROGRAMMING THAT MEETS NEEDS OF ALL
- PERMITTING SPACES WITHIN SCHOOL
- FUNDING FOR OTHER STAFF AND KEY PEOPLE DURING OUT OF SCHOOL TIME (WEEKENDS, BREAKS, SUMMER, ETC)
- OUTREACH TO NON-LEOPOLD FAMILIES WITHIN COMMUNITY